



# Big Data in Transportation

Utilizing Big Data for Transportation Management

**Andrew Malizia, PE**  
Deputy Director  
Development Services and Traffic Engineering  
Stanislaus County Public Works

# Background

- ▶ What is “Big Data”?
  - ▶ Obfuscated/Anonymized collected through:
    - ▶ Cellular - Carrier Data
    - ▶ Location Based Services (LBS) - App Data
    - ▶ Connected Vehicles (CVD) - Vehicle Data
- ▶ Can I benefit from Big Data?



## Example Products/Services

- ▶ Streetlight Data: [www.streetlightdata.com](http://www.streetlightdata.com)
- ▶ Replica: [www.replicahq.com](http://www.replicahq.com)
- ▶ INRIX : [www.inrix.com](http://www.inrix.com)
- ▶ LOCUS: [www.locusdata.io](http://www.locusdata.io)

Others are available...



## Features

- ▶ Origin-Destination / Zone-Activity
  - ▶ Average Annual Daily Traffic
  - ▶ Speed / Delay / Congestion
  - ▶ Turning Movement Counts
  - ▶ Multi-Modal Data
  - ▶ Road Closure Scenarios
  - ▶ VMT
- 
- ▶ APIs available



## Basic Usage

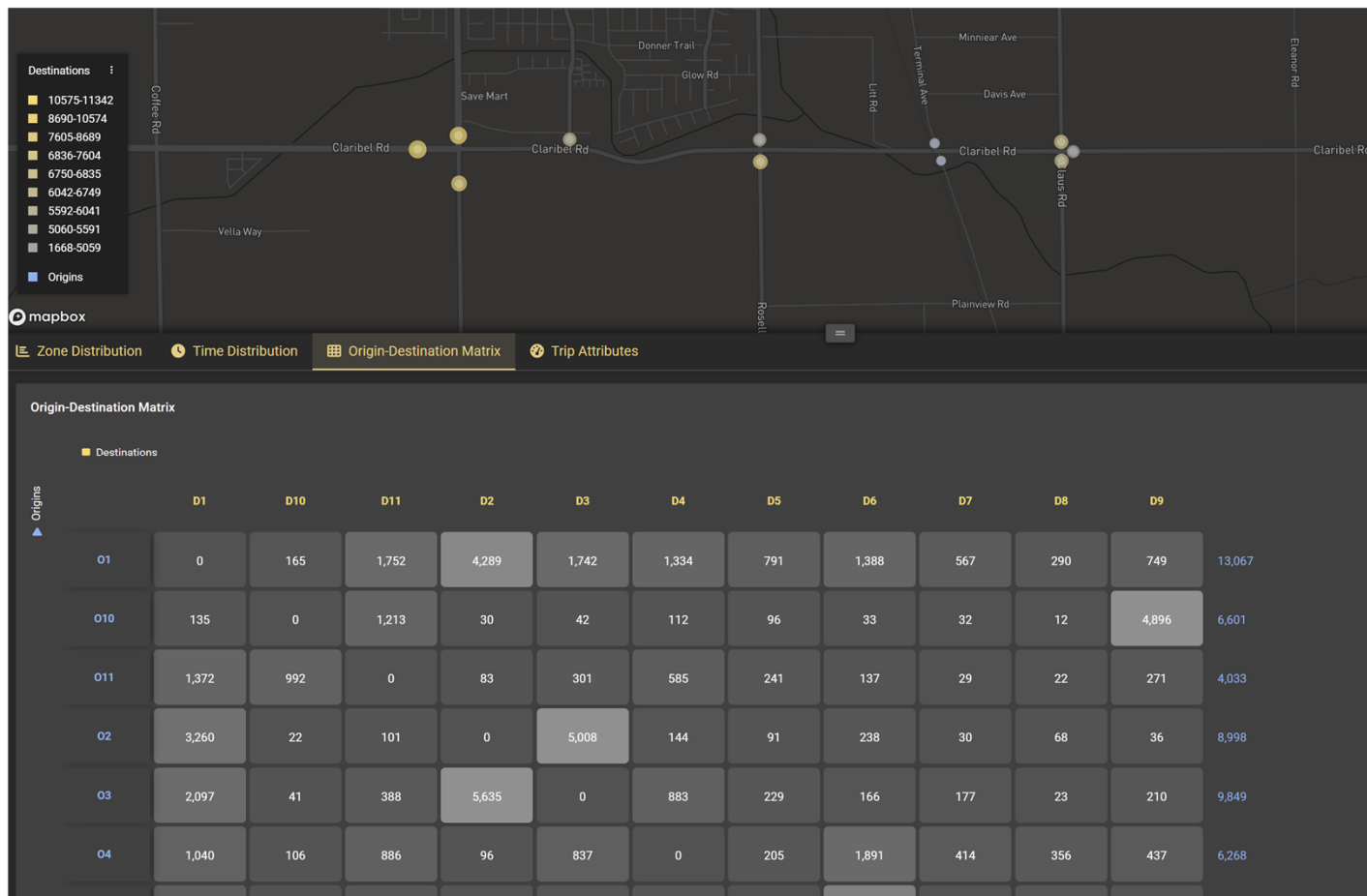
- ▶ Create “Zones”
- ▶ Zones can be pre-set geography (ie... zip code, TAZ, census block, etc...)
- ▶ Custom Zones
  - ▶ Pass-through | No/Uni/Bi-Directional
  - ▶ Non-pass-through (Internal or Trip-End)
- ▶ Select Data Period
- ▶ Day Type (Weekday/Weekend/Friday/Custom)
- ▶ Day Parts (Hourly | AM/PM Peak)

# Examples

Using Streetlight Data



# Origin - Destination



6730-6830  
6042-6749  
5592-6041  
5060-5591  
1668-5059

Origins

Mapbox

Zone Distribution Time Distribution Origin-Destination Matrix Trip Attributes

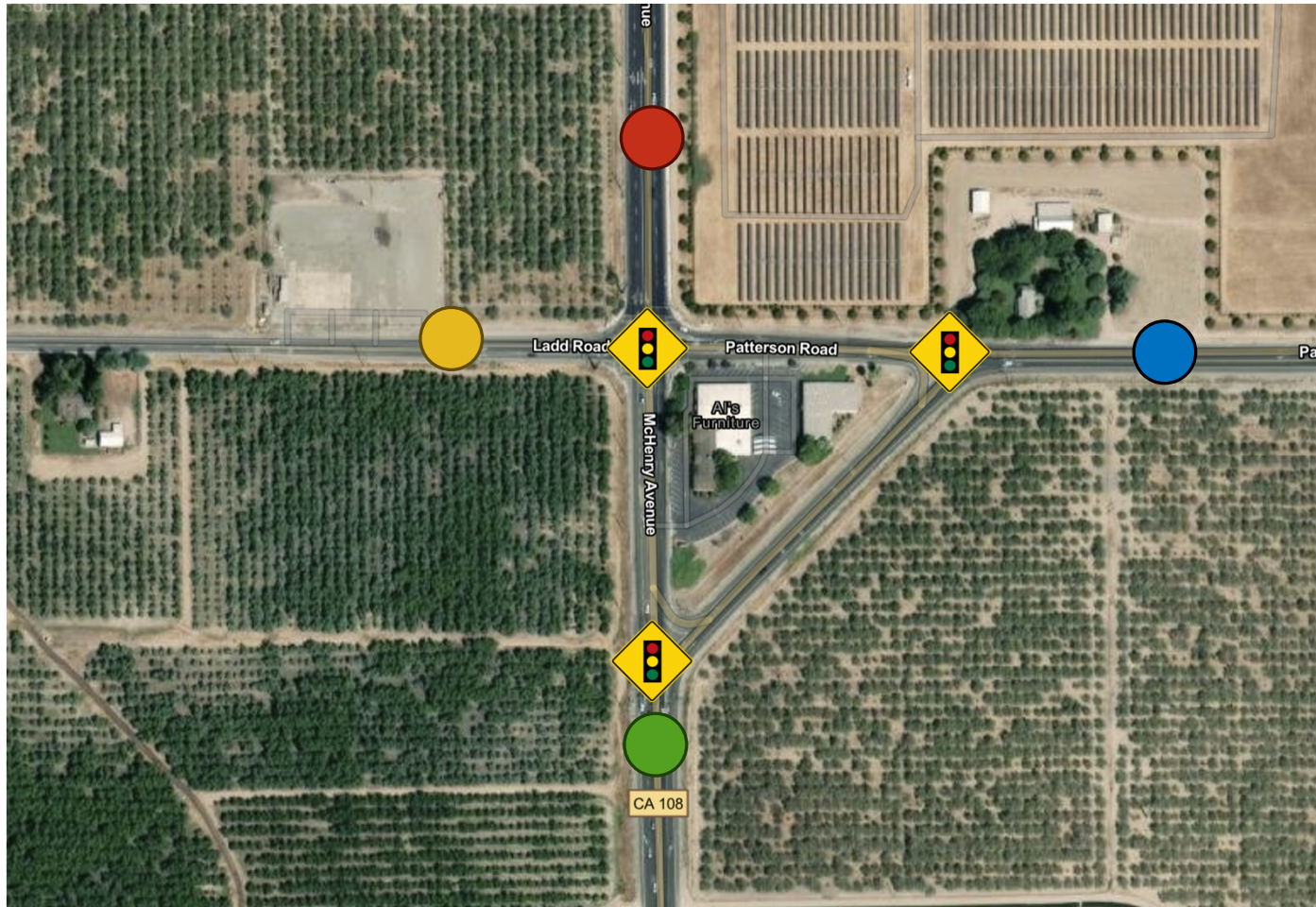
### Origin-Destination Matrix

Destinations

	D1	D10	D11	D2	D3	D4	D5	D6	D7	D8	D9	
O1	0	165	1,752	4,239	1,742	1,334	791	1,388	567	290	749	13,067
O10	135	0	1,213	30	42	112	96	33	32	12	4,896	6,601
O11	1,372	992	0	83	301	585	241	137	29	22	271	4,033
O2	3,260	22	101	0	5,008	144	91	238	30	68	36	8,998
O3	2,097	41	368	5,635	0	883	229	166	177	23	210	9,849
O4	1,040	106	886	96	837	0	205	1,891	414	356	437	6,268



# Turn Movement Counts



# Turning Movement Counts

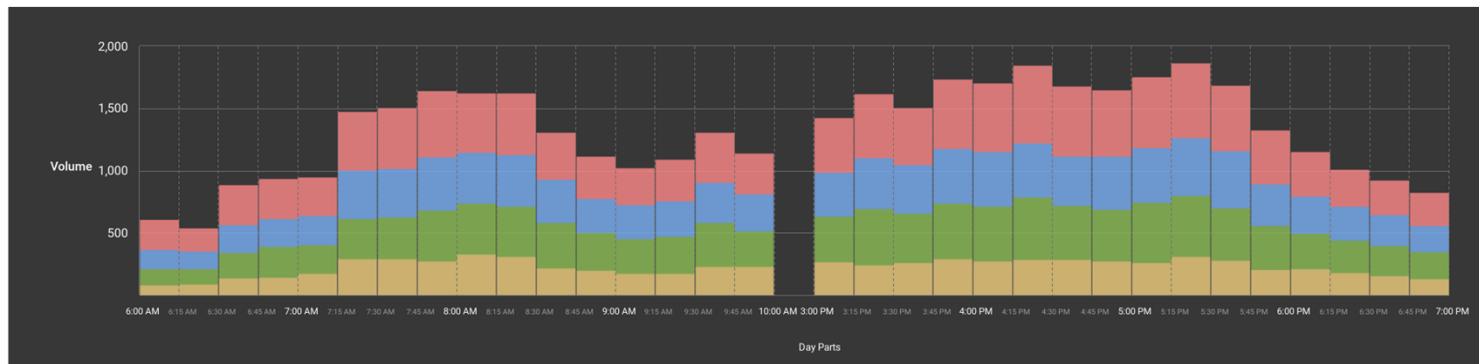
McHenry Ave north [N]			
In	7,382	Total	13,504
Out	6,122		
Right	1,721	Thru	3,842
		Left	1,819
<div style="display: flex; justify-content: space-around;"> <span>↶</span> <span>↓</span> <span>↷</span> </div>			

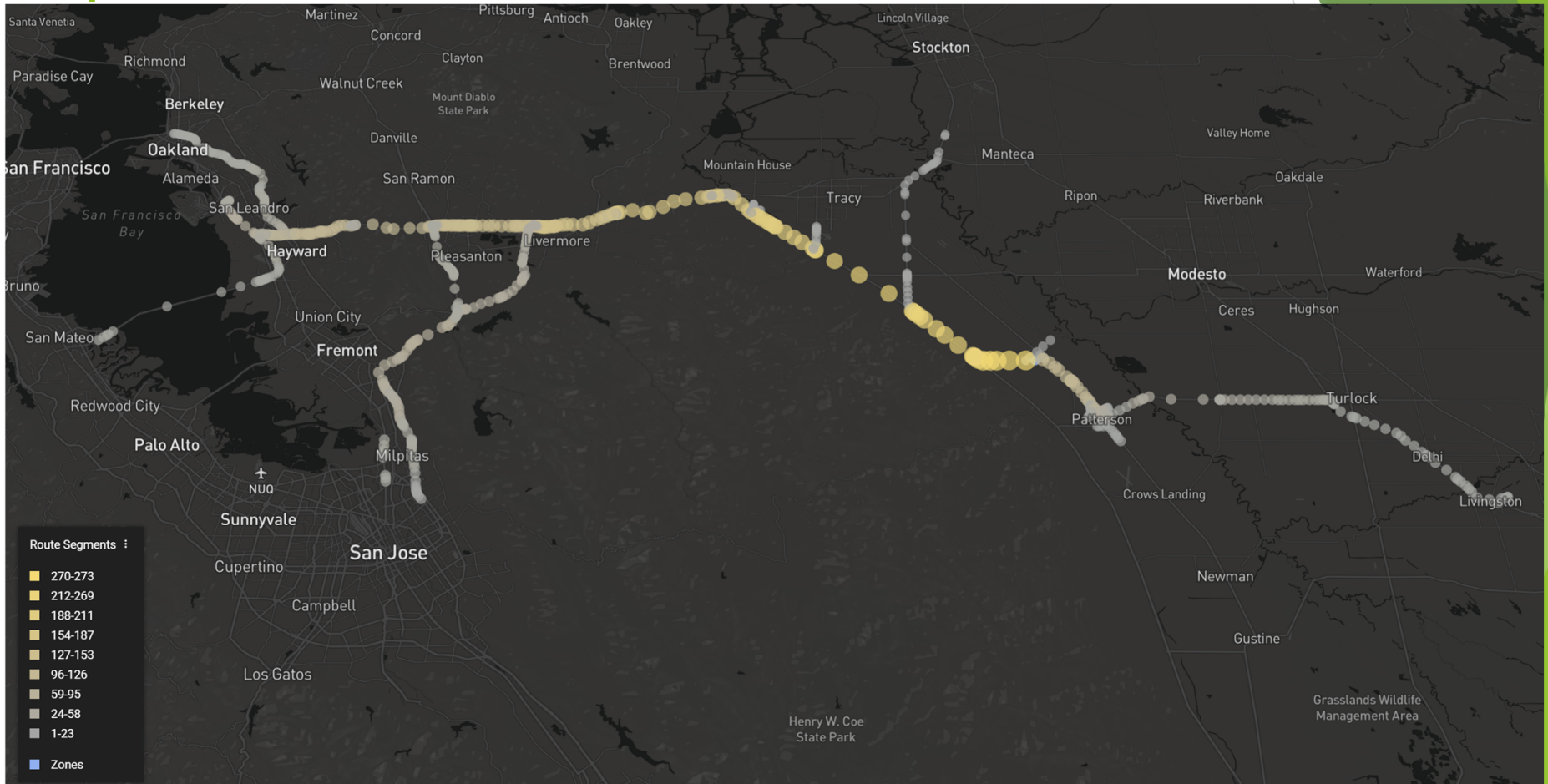
Ladd Rd west [W]		Patterson Rd [E]	
In	3,122	Left	1,283
Total	7,216	Thru	1,562
Out	4,094	Right	277
<div style="display: flex; justify-content: space-around;"> <span>↶</span> <span>↑</span> <span>↷</span> </div>		<div style="display: flex; justify-content: space-around;"> <span>↶</span> <span>↓</span> </div>	

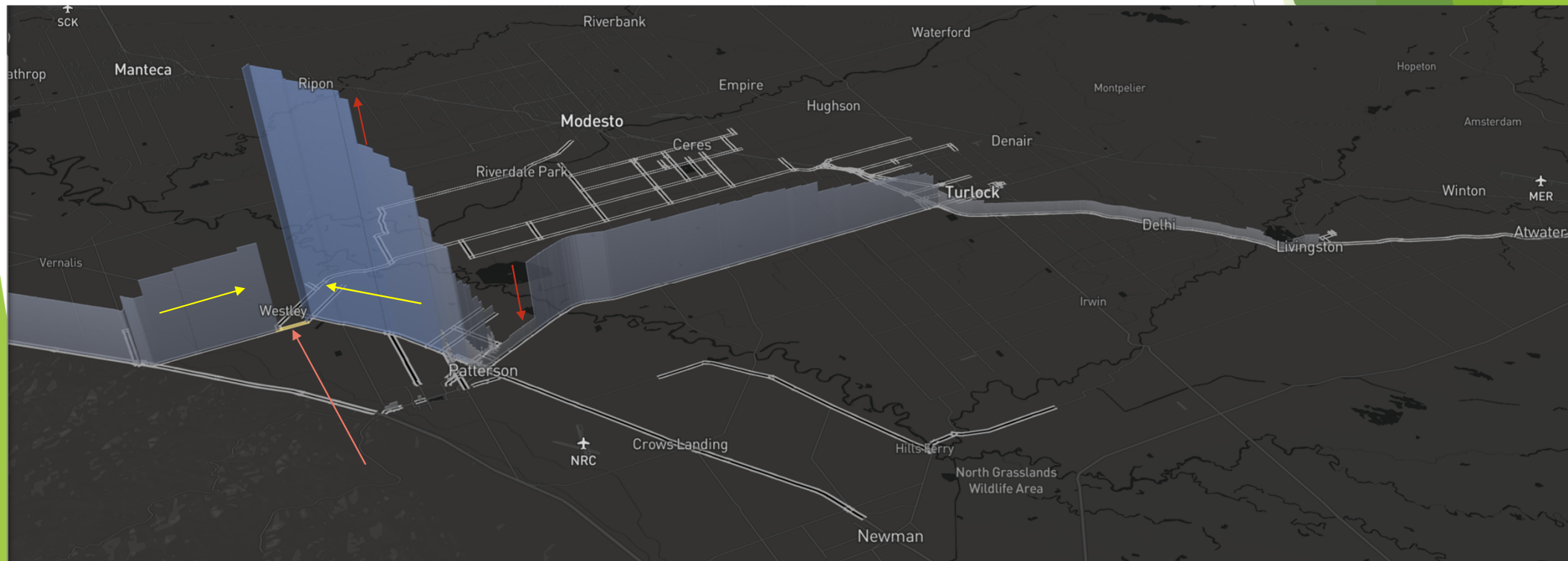
McHenry Ave south [S]			
Left	252	Thru	3,045
In	5,044	Total	10,929
Out	5,885	Right	1,747
<div style="display: flex; justify-content: space-around;"> <span>↶</span> <span>↑</span> <span>↷</span> </div>			



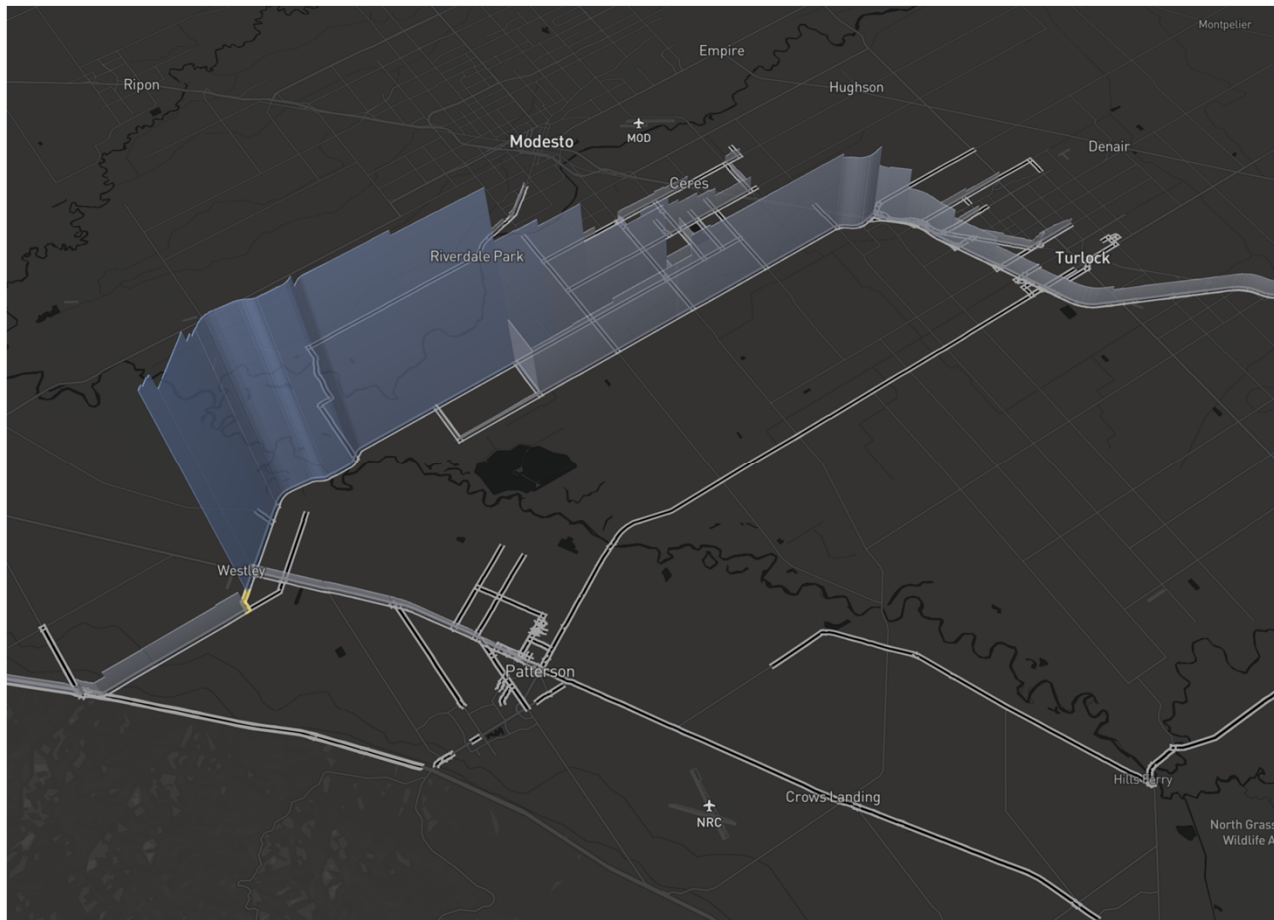
# Top Routes



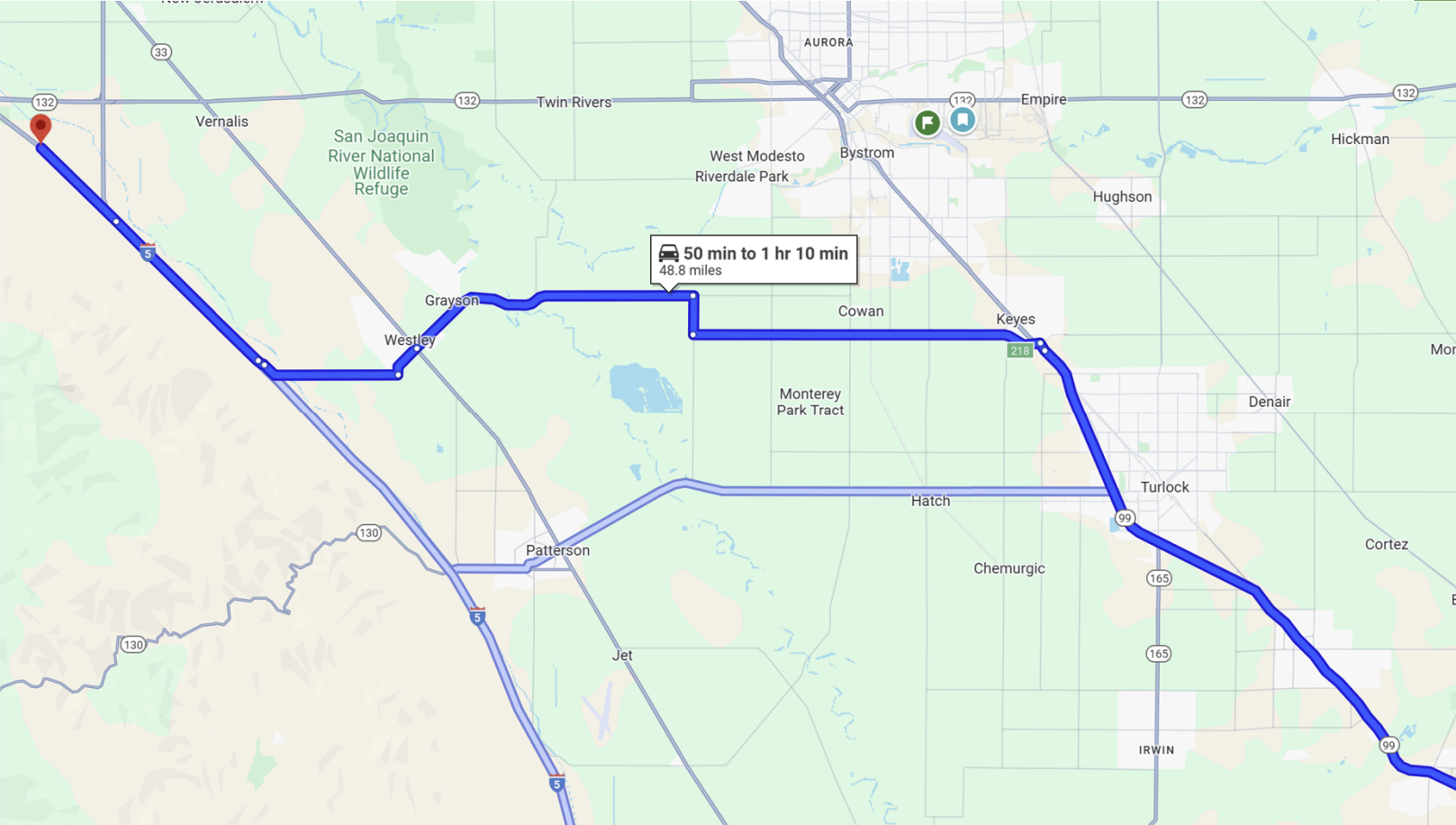
# Top Routes



# Top Routes



# Google Maps



# Questions | Discussion

**Andrew Malizia, PE**

Deputy Director

Development Services and Traffic Engineering  
Stanislaus County Public Works

[MaliziaA@stancounty.com](mailto:MaliziaA@stancounty.com)